

PRODUCT NUMBER
57202-XXX-XXXXLF

PLATING
S = 0.38µm GOLD/GXT ON CONTACT AREA
3.81µm TIN LEAD ON TAIL
G = 0.76µm GOLD/GXT ON CONTACT AREA
3.81µm TIN LEAD ON TAIL
F = GOLD FLASH ON CONTACT AREA
3.81µm TIN LEAD ON TAIL
WHEN "LF" IS REQUIRED, 2µm MIN
MATTE TIN OVER 1.27µm MIN NICKEL
INSTEAD OF TIN-LEAD

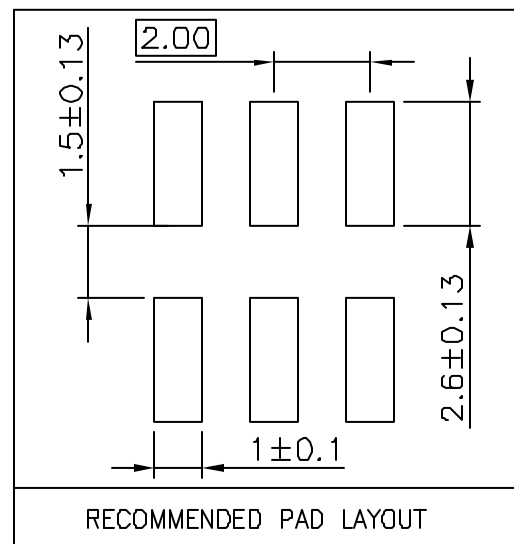
WHEN REQUIRED, ADD SUFFIX
LETTER "LF" INDICATES THE
PRODUCT IS RoHS COMPATIBLE
SEE NOTE 7
POLARIZATION, SEE NOTE 6
PACKAGING, SEE NOTE 5
NB OF POS PER ROW : 02 TO 25

STYLE	POST LENGTH ±0.2
51	2.00
52	4.00
53	3.50

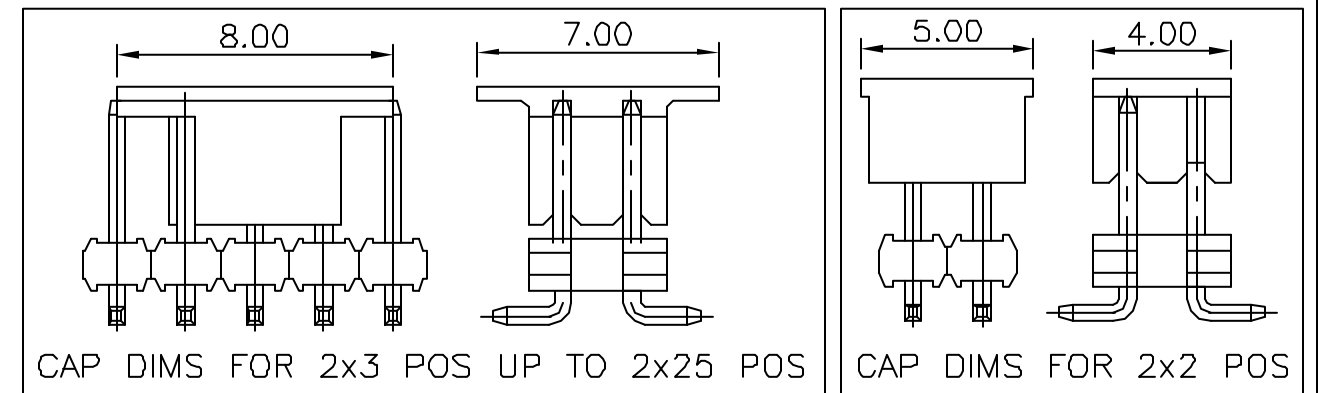
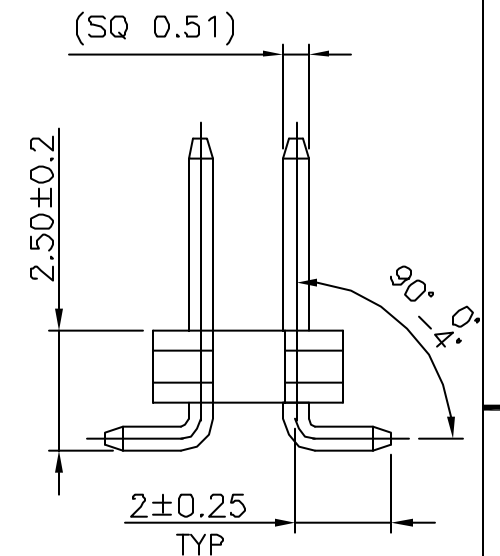
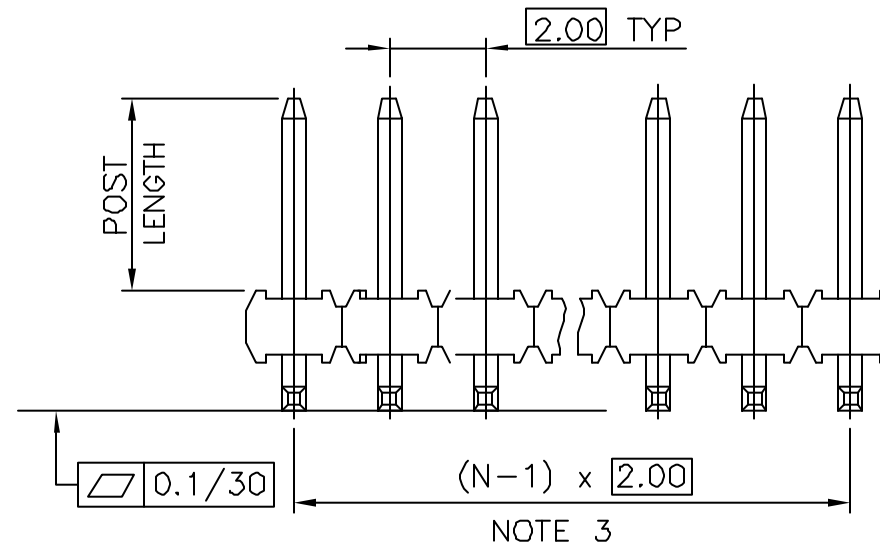
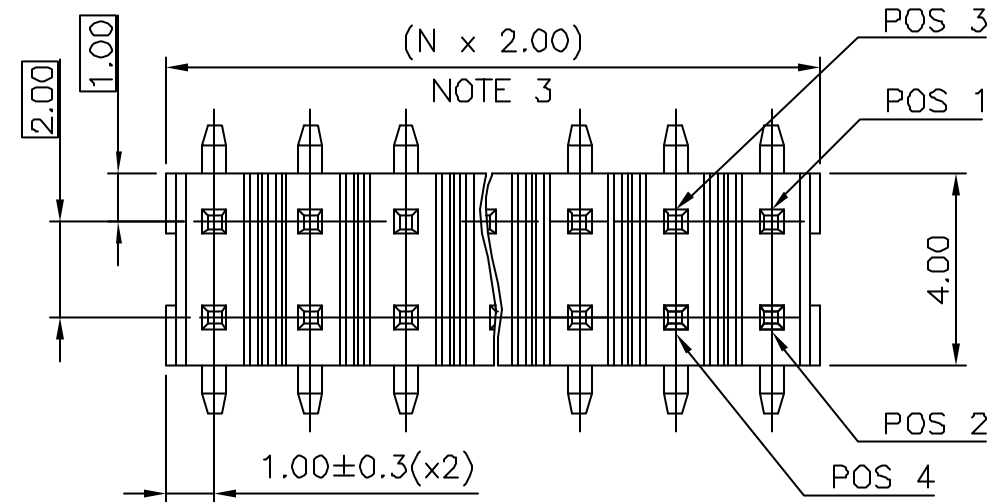
NOTES:

- MATERIAL HOUSING: HIGH TEMP. THERMOPLASTIC
UL 94V-0, COLOR BLACK
- MATERIAL TERMINAL: COPPER ALLOY
- TO DETERMINE DIMENSIONS:
N = NUMBER OF POSITIONS PER ROW.
- 7N MIN. PIN RETENTION IN EITHER DIRECTION.
- PACKAGING:
= PLASTIC BOX.
- = PLASTIC BOX WHEN POLARISATION FEATURE APPLICABLE.
U = TUBE AVAILABLE FROM 04 TO 25 POS PER ROW.
A = TAPE AND REEL WITH PICK UP CAP INSTALLED
IN THE CENTER OF THE PRODUCT FOR PICK AND PLACE
SEE TA 884 FOR PRODUCT AVAILABILITY.
- FOR POLARIZATION, SPECIFY POSITION NUMBER TO OMIT PIN.
EXAMPLE : 03 = OMIT PIN POSITION 3, SEE TOP VIEW.
OMIT FROM PRODUCT NUMBER IF THIS FEATURE IS NOT APPLICABLE.
- RoHS COMPATIBLE PRODUCT SPECIFICATIONS

- PLATING:
- "LF" MEANS THE PRODUCT IS LEAD-FREE,
2µm MINIMUM MATTE TIN OVER 1.27µm
MINIMUM NICKEL UNDERPLATE.
- MANUFACTURING PROCESS COMPATIBILITY
- THE HOUSING WILL WITHSTAND EXPOSURE TO
260°C PEAK TEMPERATURE FOR 30 SECONDES
IN A CONVECTION, INFRA-RED OR VAPOR
PHASE REFLOW OVEN.
- LABELLING:
- MEETS PACKAGING SPECS AS PER GS-14-920
- LEGAL STATEMENT : SEE GS-22-008



TOP VIEW



mat'l. code		surface ISO 1302	tolerance ISO 406	projection 1:1	product family MINITEK
ltr		tolerances unless otherwise specified		mm	title UNSH HEADER 2.00 mm VERTICAL SMT
D	V10963 DAI 01.03.07	angles	.X ±0.3		
E	F04-0178 LMU 04.11.25	linear	.XX ±0.13	scale 1:1	dwg no 57202
F	F04-0378 LMU 04.11.25		.XXX ±0.05		
G	F05-0124 LMU 05.02.07	dr	LMULIN 04.05.06	sheet 1 of 1	size A3
H	F06-0210 LMU 06.07.04	engr	J.COMPAGNON 0.4.11.25		
J	F06-0327 LMU 07.01.03	chr		type CUSTOMER Drawing	
K	F08-0145 ELA 17.04.08	appd	JM.C 04.11.25		
sheet index	revision sheet				